

46

MATCHLINE "A" SEE DETAIL "A" THIS SHEET

(UNPLATTED) LIMITS OF PLAT

PLAT OF LA MANCHA (PER PLAT BOOK 29, PAGES 165-170)

LIMITS OF PLAT

LIMITS OF PLAT

N 02°08'44" E 4468.07'

LIMITS OF PLAT

LIMITS OF PLAT

LIMITS OF PLAT

LIMITS OF PLAT

LIMITS OF PLAT

TRACT B-1

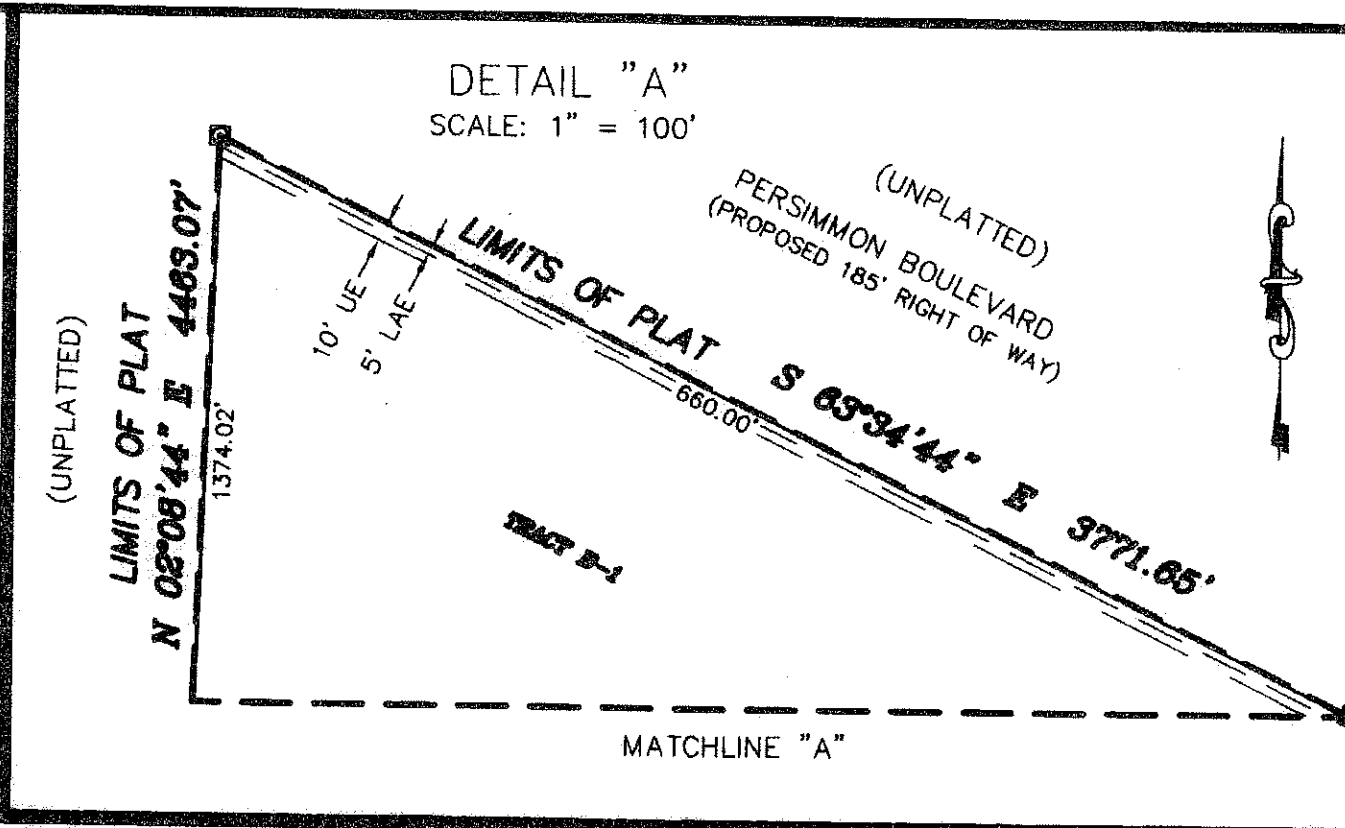
LIMITS OF PLAT

TRACT B-1

(UNPLATTED)

PERSIMMON BOULEVARD (PROPOSED 185' RIGHT OF WAY)

S 63°34'44" E 3771.65'

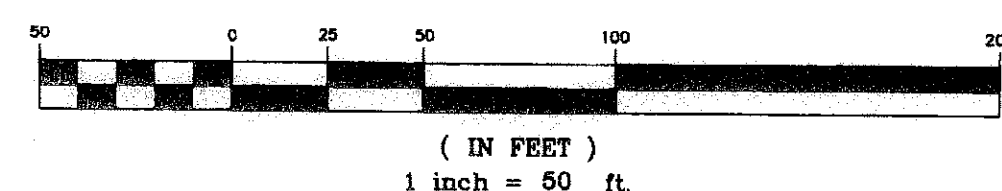


(UNPLATTED)

LIMITS OF PLAT

TRACT B-1

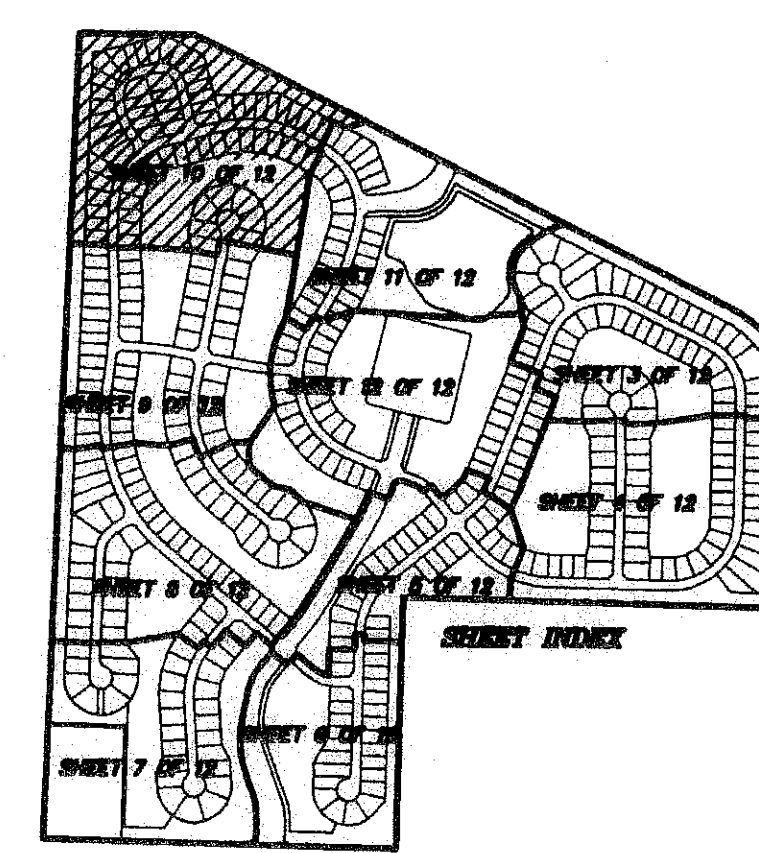
GRAPHIC SCALE



- LEGEND:**
- D= DELTA (CENTRAL ANGLE)
 - L= LENGTH
 - R= RADIUS
 - CB= CHORD BEARING
 - CD= CHORD DISTANCE
 - PSM= PROFESSIONAL SURVEYOR AND MAPPER
 - PLS= PROFESSIONAL LAND SURVEYOR
 - LA= LIMITED ACCESS EASEMENT
 - MREE= MAINTENANCE ROOF AND EAVES EASEMENT
 - UE= UTILITY EASEMENT
 - OE= ORAINAGE EASEMENT
 - OS= OPEN SPACE
 - WMT= WATER MANAGEMENT TRACT
 - (R)= RADIAL
 - (NR)= NON-RADIAL
 - PG= PAGE
 - ORB= OFFICIAL RECORD BOOK
 - P.B.C.U.E.= PALM BEACH COUNTY UTILITY EASEMENT
 - L.A.E.= LIMITED ACCESS EASEMENT
 - (UNLESS OTHERWISE NOTED)
 - = PERMANENT CONTROL POINT "LB 4318"

WATER MANAGEMENT TRACT No. 1

WATER MANAGEMENT TRACT No. 1



PORTOSOL
 IN SECTIONS 13 AND 24, TOWNSHIP 43 SOUTH, RANGE 41 EAST,
 VILLAGE OF ROYAL PALM BEACH, PALM BEACH COUNTY, FLORIDA
 MAY 2007
 SHEET 10 OF 12

NMI NICK MILLER, INC. 2560 RCA BLVD., STE. 105, PALM BEACH GARDENS, FL 33410 TEL: 561.627.5200 FAX: 561.627.0983 www.nickmillerinc.com D.B.P.R. BUSINESS LICENSE No. 4318	PORTOSOL	
	SHEET NO.	SCALE: 1" = 50'
	10 OF 12	DATE: MAY 2007
		JOB NO. 1038.004
	FILE:	1038.004.DWG

MATCHLINE SEE SHEET 9 OF 12

MATCHLINE SEE SHEET 9 OF 12

MATCHLINE SEE SHEET 11 OF 12

MATCHLINE SEE SHEET 11 OF 12

